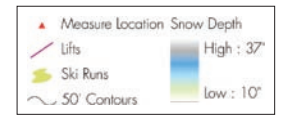
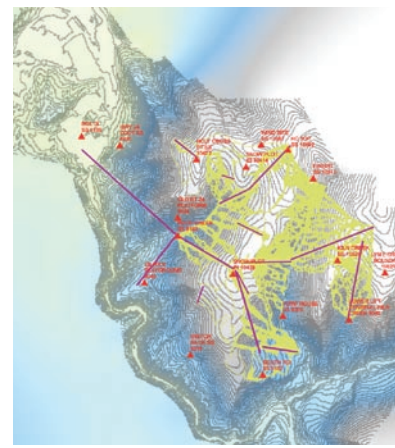
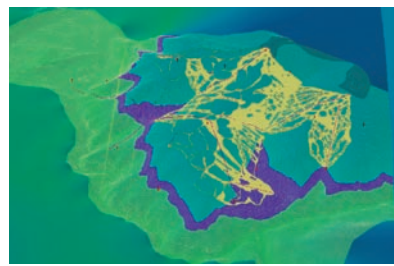
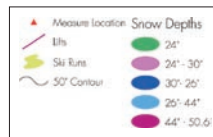
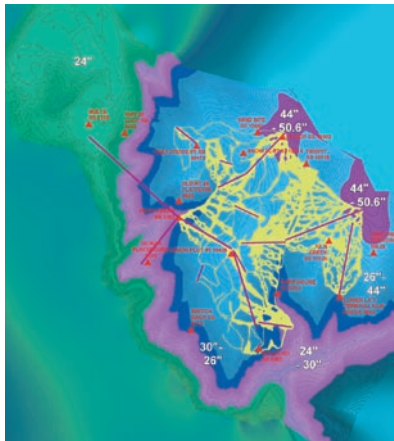
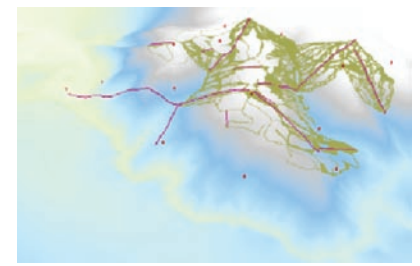


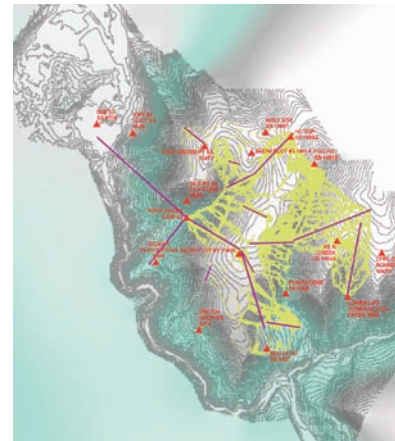
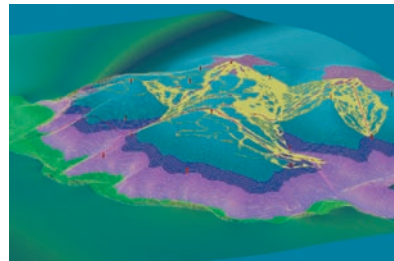
December 2006



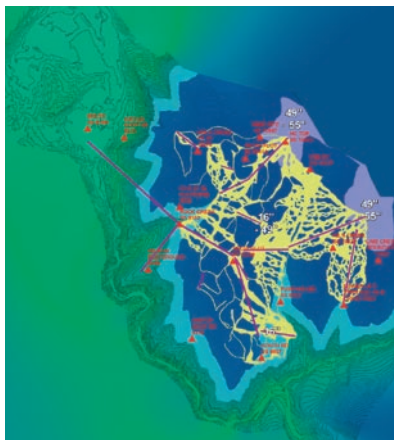
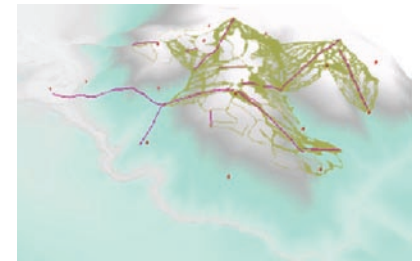
December 2007



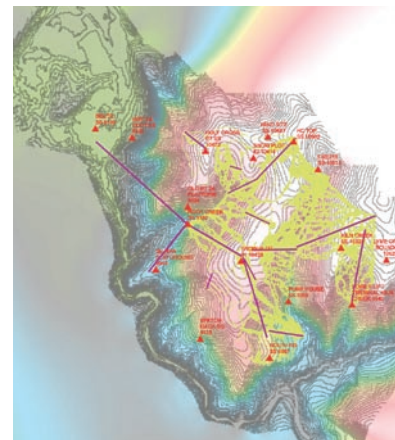
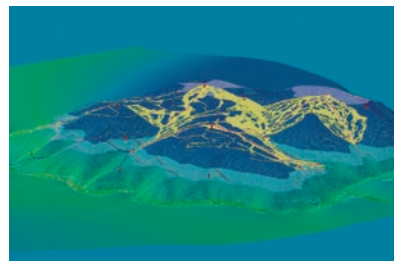
February 2007



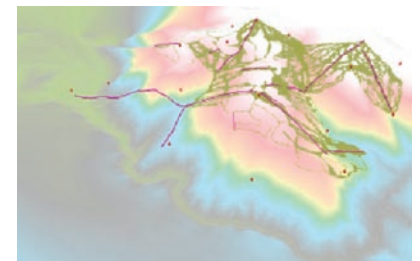
February 2008



April 2007



April 2008



Battle Mountain is a proposed ski resort located in Colorado. By using lidar data with Merrick Advanced Remote Sensing (MARS) software, a highly accurate digital terrain model was created. Throughout the ski seasons of 2006–2007 and 2007–2008, snow depths were measured at set locations and regular intervals across the area. This data was compiled on a monthly basis and mapped using ArcGIS Desktop to create the different snow depth areas.

ArcScene is used to view the data in 3D to better understand the terrain related to the depth. These snow depths are used in the resort planning process for ski run locations, snowmaking needs, and possible development sites. Having these depths also allows for spring runoff calculations for the different basins on the development.

Copyright North Line GIS, LLC, 2008.

North Line GIS, LLC
Breckenridge, Colorado, USA
By Trip McLaughlin

Contact
Trip McLaughlin
maps@northlinegis.com

Software
ArcGIS Desktop 9.3, ArcScene, MARS

Printer
HP Designjet 5500 ps

Data Sources
Dan Moroz Consulting and North Line GIS